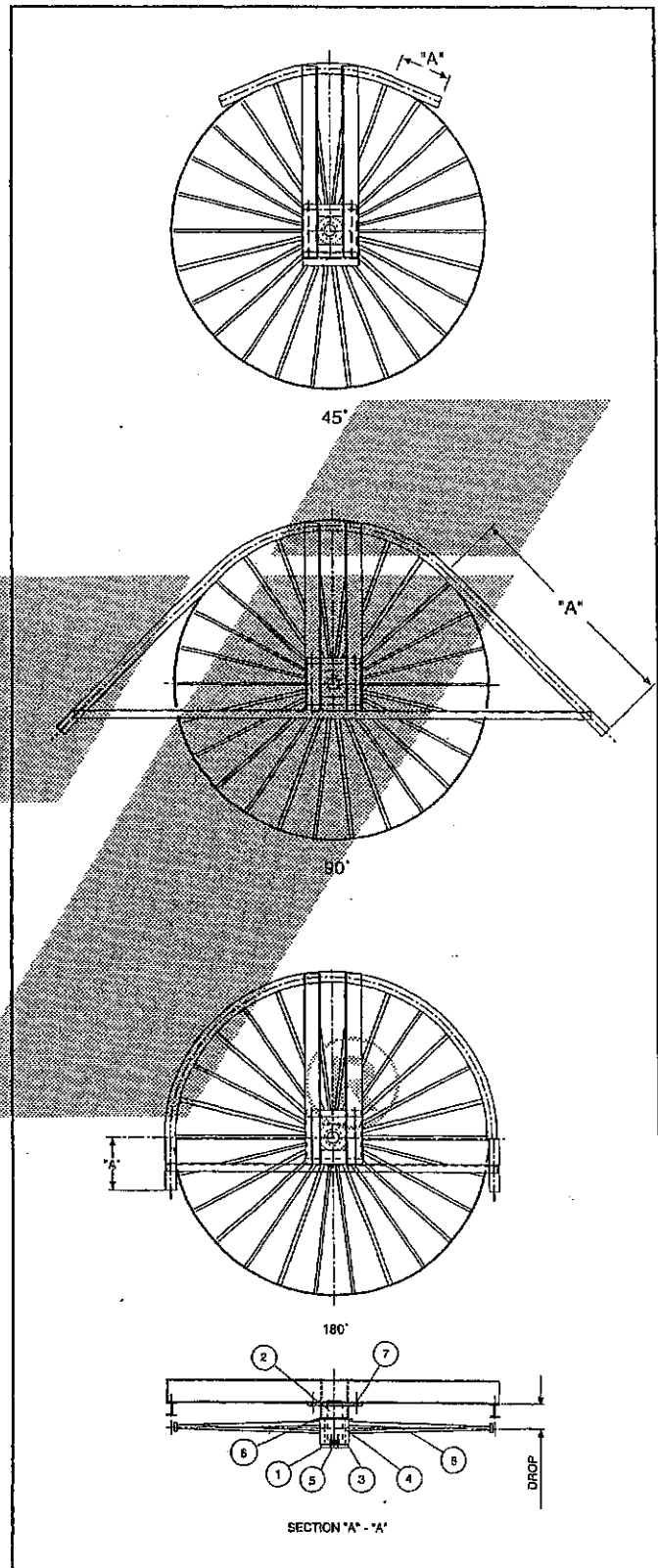


2⁵/₈" I, TRACTION WHEEL TURN ASSEMBLY – GRAPHITE BUSHING - 4¹/₂" DROP

PITCH DIA.	DEG. OF TURN	WHEEL NO.	DIM. "A"	TOTAL WT.	TURN ASM. NO.
GRAPHITE BUSHING					
18"	45°	203-18	1'0"	60#	211-1845
	90°		1'9"	62#	211-1890
	180°		1'0"	73#	211-1818
24"	45°	203-24	1'0"	72#	211-2445
	90°		2'0"	75#	211-2490
	180°		1'0"	89#	211-2418
30"	45°	203-30	1'0"	82#	211-3045
	90°		2'3"	86#	211-3090
	180°		1'0"	104#	211-3018
36"	45°	203-36	1'0"	99#	211-3645
	90°		2'6"	104#	211-3690
	180°		1'0"	125#	211-3618
42"	45°	203-42	1'0"	112#	211-4245
	90°		2'9"	117#	211-4290
	180°		1'0"	142#	211-4218
48"	45°	203-48	1'0"	131#	211-4845
	90°		3'0"	137#	211-4890
	180°		1'0"	165#	211-4818

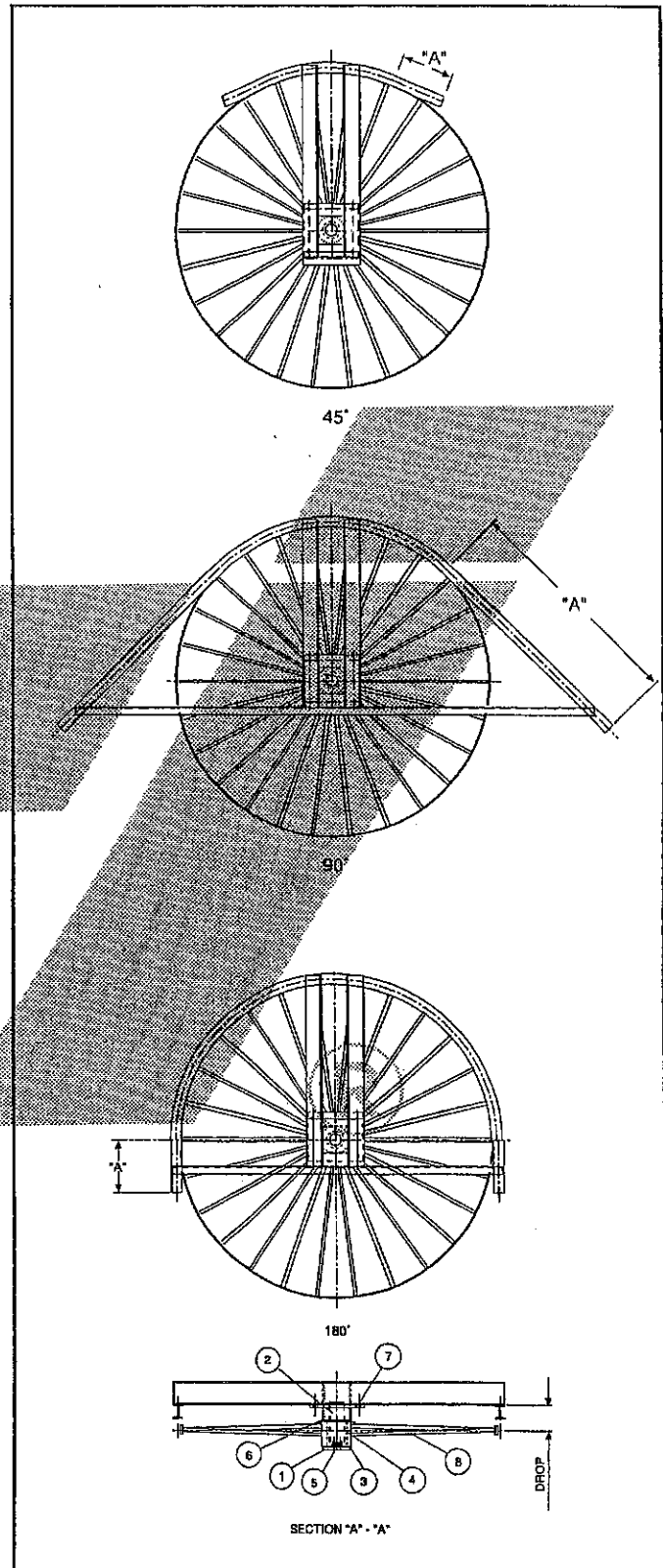


MARK	QTY.	PT. NO.	DESCRIPTION
1	1	1009	THRUST PLATE
2	1	1030	SHAFT ASSEMBLY
3	1	1026	C-GRAPHITE THRUST WASHER
4	1	1029	C-GRAPHITE SLEEVE BEARING
5	2		3/8" x 1 1/4" HHCS, DRILLED
6			N/A
7	4		3/8" x 1 1/4" HH BOLT
8	1	203-	WHEEL ASSEMBLY



3" I, TRACTION WHEEL TURN ASSEMBLY GRAPHITE BUSHING - 5 1/2" DROP

PITCH DIA.	DEG. OF TURN	WHEEL NO.	DIM. "A"	TOTAL WT.	TURN ASM. NO.
GRAPHITE BUSHING					
18"	45°	303-18	1'0"	152#	311-1845
	90°		21"	170#	311-1890
	180°		1'0"	162#	311-1818
24"	45°	303-24	1'0"	175#	311-2445
	90°		24"	198#	311-2490
	180°		1'0"	188#	311-2418
30"	45°	303-30	1'0"	200#	311-3045
	90°		27"	228#	311-3090
	180°		1'0"	217#	311-3018
36"	45°	303-36	1'0"	227#	311-3645
	90°		30"	259#	311-3690
	180°		1'0"	247#	311-3618
42"	45°	303-42	1'0"	254#	311-4245
	90°		33"	292#	311-4290
	180°		1'0"	278#	311-4218
48"	45°	303-48	1'0"	275#	311-4845
	90°		36"	318#	311-4890
	180°		1'0"	302#	311-4818
54"	45°	303-54	1'0"	298#	311-5445
	90°		39"	347#	311-5490
	180°		1'0"	328#	311-5418
60"	45°	303-60	1'0"	357#	311-6045
	90°		42"	425#	311-6090
	180°		1'0"	402#	311-6018
66"	45°	303-66	1'0"	383#	311-6645
	90°		45"	455#	311-6690
	180°		1'0"	432#	311-6618
72"	45°	303-72	1'0"	411#	311-7245
	90°		48"	494#	311-7290
	180°		1'0"	464#	311-7218



MARK	QTY.	PT. NO.	DESCRIPTION
1	1	1007	THRUST PLATE
2	1	1040	SHAFT ASSEMBLY
3	1	1025	C-GRAPHITE THRUST WASHER
4	1	1028	C-GRAPHITE SLEEVE BEARING
5	3		1/2" x 1 1/2" HHCS, DRILLED
6	1	1014	DUST COVER
7	4		3/4" x 1 1/2" BOLT
8	1	303-	WHEEL ASSEMBLY



Rapid Industries, Inc.

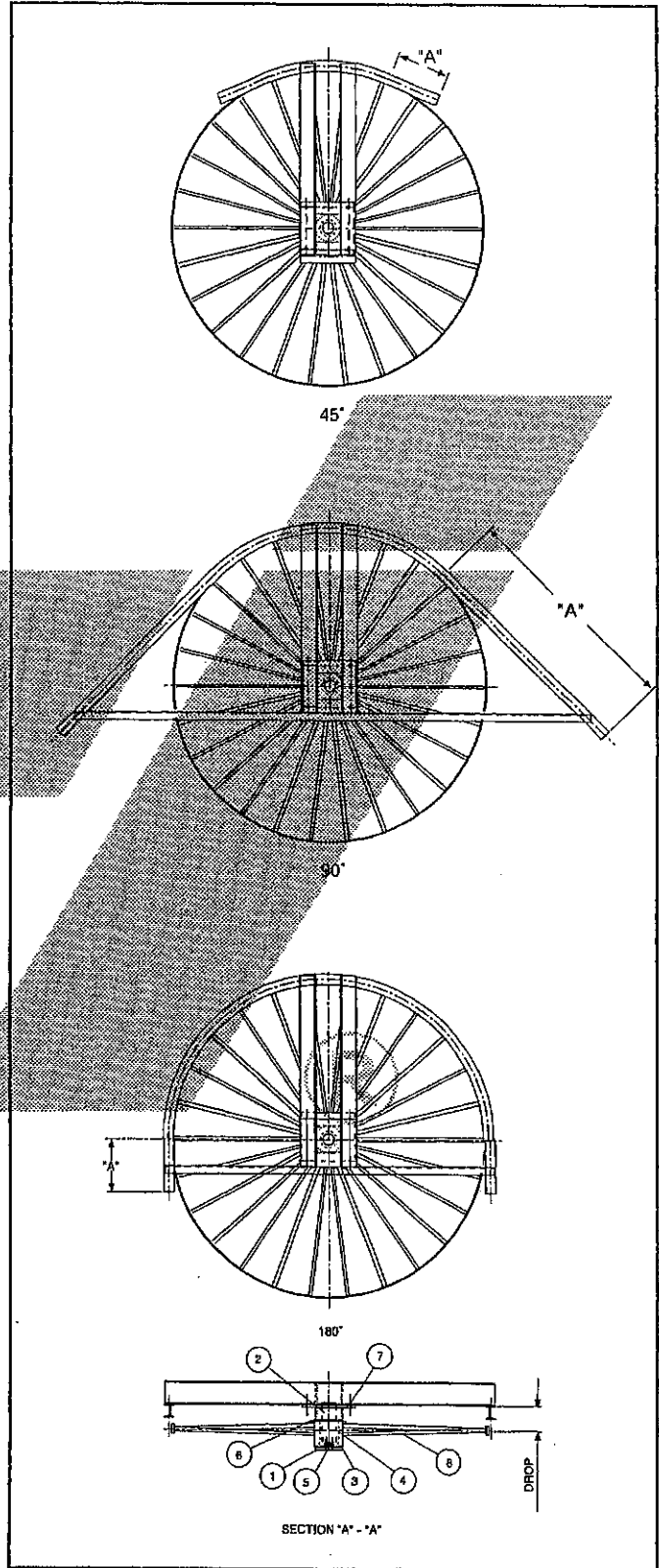
DRAWINGS FOR CONCEPT ONLY; NOT FOR ENGINEERING USE

4" I, TRACTION WHEEL TURN ASSEMBLY GRAPHITE BUSHING - 7³/₁₆" & 8" DROP

PITCH DIA.	DEG. OF TURN	WHEEL NO.	DIM. "A"	TOTAL WT.	TURN ASM. NO.
GRAPHITE BUSHING					
24"	45°	403-24	1'0"	198#	411-2445
	90°		24"	224#	411-2490
	180°		1'0"	212#	411-2418
30"	45°	403-30	1'0"	225#	411-3045
	90°		27"	260#	411-3090
	180°		1'0"	244#	411-3018
36"	45°	403-36	1'0"	255#	411-3645
	90°		30"	297#	411-3690
	180°		1'0"	282#	411-3618
42"	45°	403-42	1'0"	284#	411-4245
	90°		33"	332#	411-4290
	180°		1'0"	314#	411-4218
48"	45°	403-48	1'0"	310#	411-4845
	90°		36"	366#	411-4890
	180°		1'0"	345#	411-4818
54"	45°	403-54	1'0"	338#	411-5445
	90°		39"	401#	411-5490
	180°		1'0"	379#	411-5418
60"	45°	403-60	1'0"	376#	411-6045
	90°		42"	444#	411-6090
	180°		1'0"	421#	411-6018
66"	45°	403-66	1'0"	404#	411-6645
	90°		45"	476#	411-6690
	180°		1'0"	453#	411-6618
72"	45°	403-72	1'0"	434#	411-7245
	90°		48"	517#	411-7290
	180°		1'0"	487#	411-7218

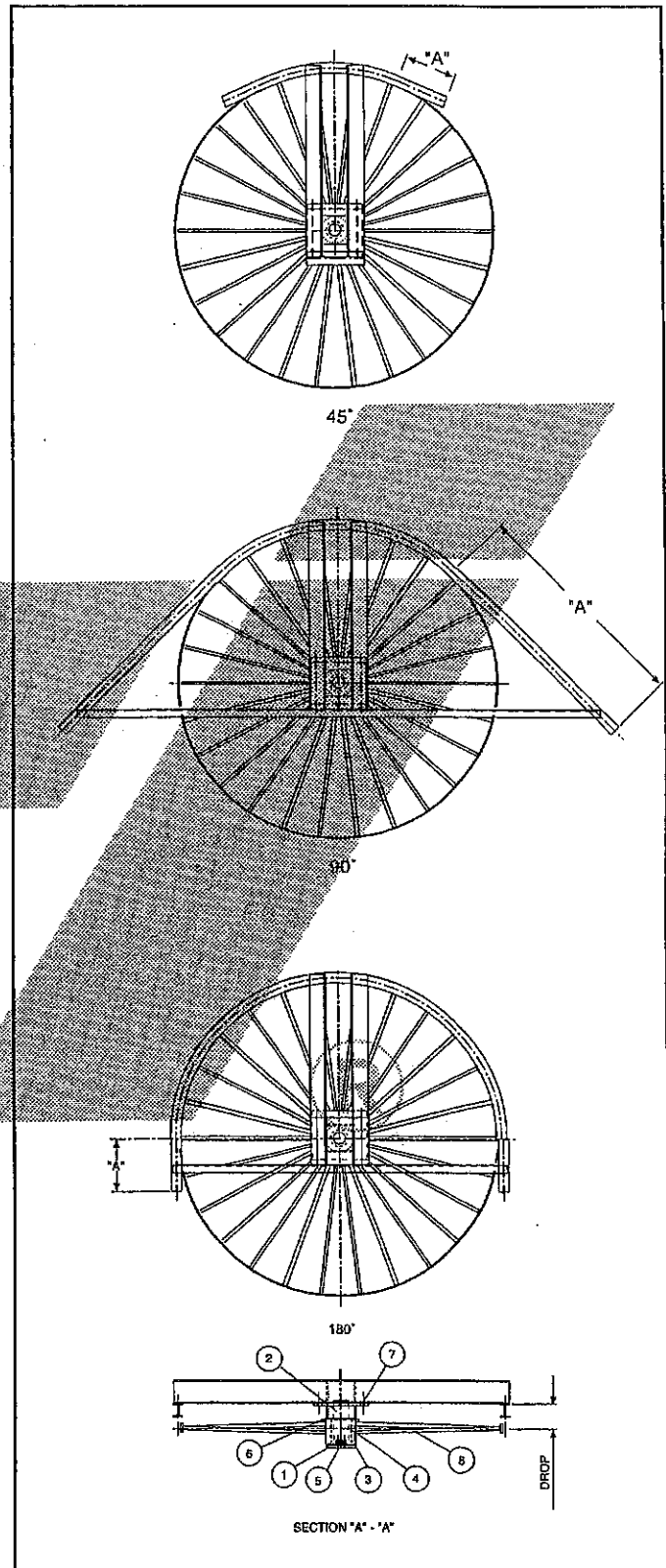
MARK	QTY.	PT. NO.	DESCRIPTION
1	1	1007	THRUST PLATE
2	1	1003	SHAFT ASSEMBLY
3	1	1025	C-GRAPHITE THRUST WASHER
4	1	1028	C-GRAPHITE SLEEVE BEARING
5	3		1/2" x 1 1/2" HHCS, DRILLED
6	1	1014	DUST COVER
7	4		1/2" x 1 1/2" BOLT
8	1	403-	WHEEL ASSEMBLY

NOTE: WHEEL ASMS. 403- HAVE HUB NO. 1018, THAT IS MOUNTED OFF CENTER TO RIM. TO CHANGE DROP, REVERSE WHEEL.



6" I, TRACTION WHEEL TURN ASSEMBLY FOR X-458 CHAIN GRAPHITE BUSHING – 10" DROP

PITCH DIA.	DEG. OF TURN	WHEEL NO.	DIM. "A"	TOTAL WT.	TURN ASM. NO.
GRAPHITE BUSHING					
24"	45°	403-24	1'0"	216#	611-2445
	90°		24"	264#	611-2490
	180°		1'0"	230#	611-2418
30"	45°	403-30	1'0"	248#	611-3045
	90°		27"	322#	611-3090
	180°		1'0"	286#	611-3018
36"	45°	403-36	1'0"	274#	611-3645
	90°		30"	336#	611-3690
	180°		1'0"	308#	611-3618
42"	45°	403-42	1'0"	304#	611-4245
	90°		33"	376#	611-4290
	180°		1'0"	348#	611-4218
48"	45°	403-48	1'0"	331#	611-4845
	90°		36"	414#	611-4890
	180°		1'0"	389#	611-4818
54"	45°	403-54	1'0"	366#	611-5445
	90°		39"	460#	611-5490
	180°		1'0"	430#	611-5418
60"	45°	403-60	1'0"	399#	611-6045
	90°		42"	501#	611-6090
	180°		1'0"	472#	611-6018
66"	45°	403-66	1'0"	440#	611-6645
	90°		45"	563#	611-6690
	180°		1'0"	518#	611-6618
72"	45°	403-72	1'0"	473#	611-7245
	90°		48"	598#	611-7290
	180°		1'0"	543#	611-7218



MARK	QTY.	PT. NO.	DESCRIPTION
1	1	1007	THRUST PLATE
2	1	1043	SHAFT ASSEMBLY
3	1	1025	C-GRAPHITE THRUST WASHER
4	1	1028	C-GRAPHITE SLEEVE BEARING
5	3		1/2" x 1 1/2" HHCS, DRILLED
6	1	1014	DUST COVER
7	4		1/2" x 1 1/2" BOLT
8	1	403-	WHEEL ASSEMBLY

NOTE: 8" DROP POSITION FOR REVERSIBLE WHEEL USING #1043 SHAFT ASSEMBLY.

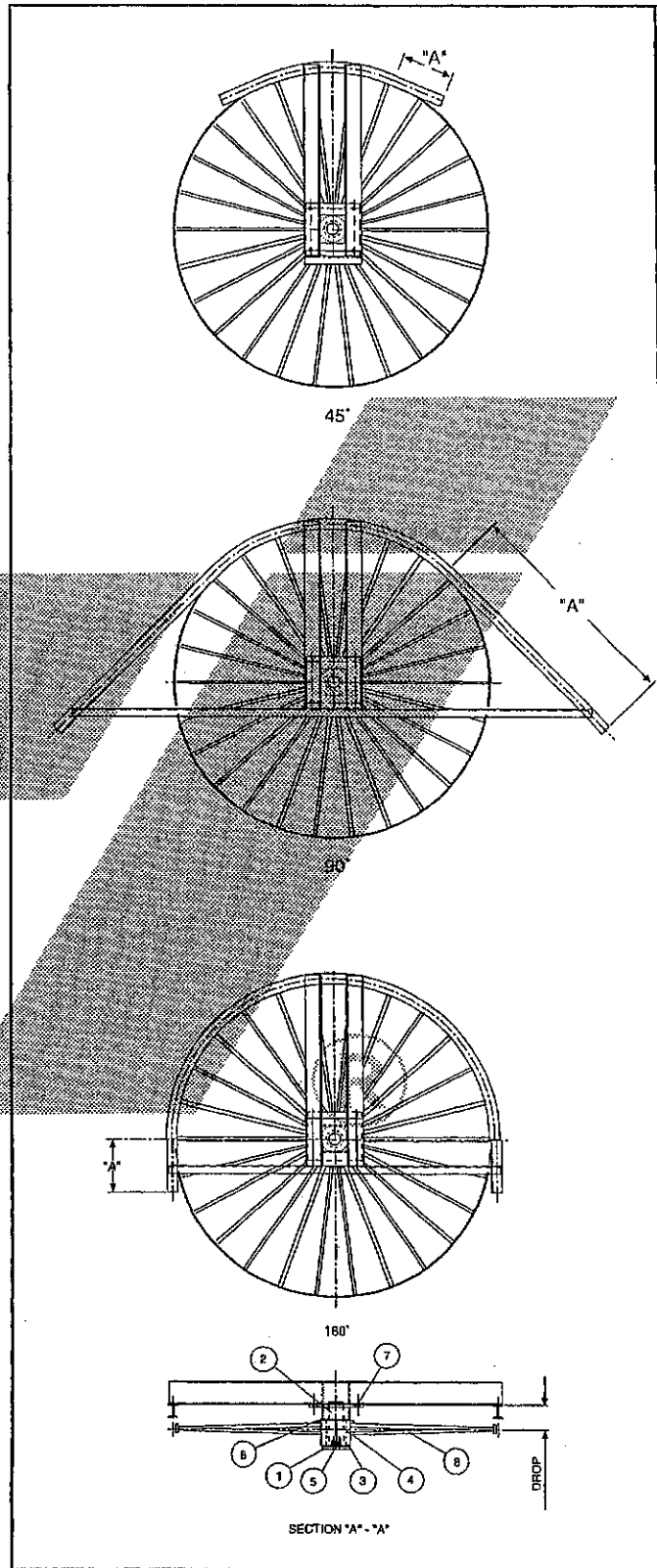


Rapid Industries, Inc.

DRAWINGS FOR CONCEPT ONLY; NOT FOR ENGINEERING USE

6" I, TRACTION WHEEL TURN ASSEMBLY GRAPHITE BUSHING - 10" DROP

PITCH DIA.	DEG. OF TURN	WHEEL NO.	DIM. "A"	TOTAL WT.	TURN ASM. NO.
GRAPHITE BUSHING					
24"	45°	603-24	1'0"	291#	612-2445
	90°		24"	299#	612-2490
	180°		1'0"	287#	612-2418
30"	45°	603-30	1'0"	276#	612-3045
	90°		27"	327#	612-3090
	180°		1'0"	309#	612-3018
36"	45°	603-36	1'0"	331#	612-3645
	90°		30"	393#	612-3690
	180°		1'0"	375#	612-3618
42"	45°	603-42	1'0"	359#	612-4245
	90°		33"	441#	612-4290
	180°		1'0"	422#	612-4218
48"	45°	603-48	1'0"	406#	612-4845
	90°		36"	489#	612-4890
	180°		1'0"	464#	612-4818
54"	45°	603-54	1'0"	452#	612-5445
	90°		39"	553#	612-5490
	180°		1'0"	519#	612-5418
60"	45°	603-60	1'0"	502#	612-6045
	90°		42"	604#	612-6090
	180°		1'0"	575#	612-6018
66"	45°	603-66	1'0"	531#	612-6645
	90°		45"	629#	612-6690
	180°		1'0"	609#	612-6618
72"	45°	603-72	1'0"	571#	612-7245
	90°		48"	658#	612-7290
	180°		1'0"	619#	612-7218

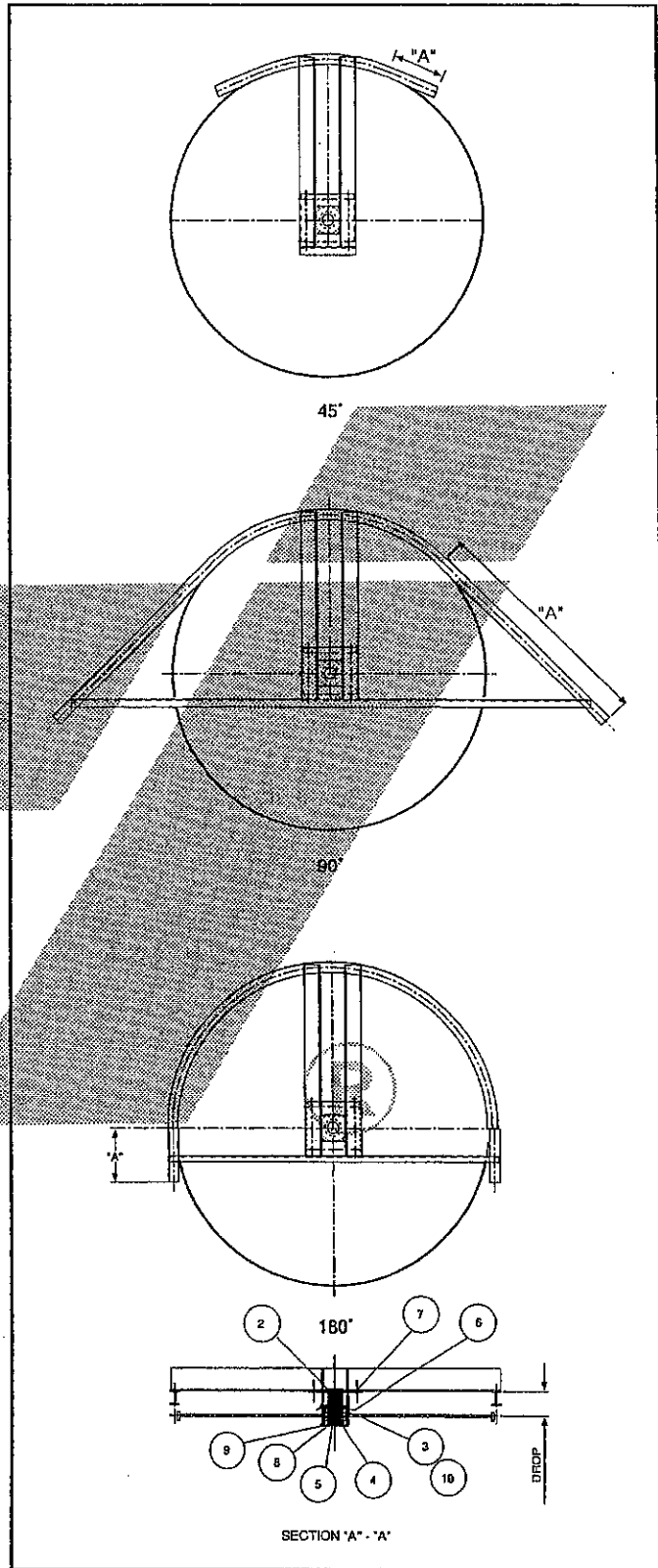


MARK	QTY.	PT. NO.	DESCRIPTION
1	1	1007	THRUST PLATE
2	1	1044	SHAFT ASSEMBLY
3	1	1025	C-GRAPHITE THRUST WASHER
4	1	1028	C-GRAPHITE SLEEVE BEARING
5	3		1/2" x 1 1/2" HHCS, DRILLED
6	1	1014	DUST COVER
7	4		1/2" x 1 1/2" BOLT
8	1	603-	WHEEL ASSEMBLY



3" I, PLATE WHEEL TURN ASSEMBLY TIMKEN BEARING - 5 1/2" DROP

PITCH DIA.	DEG. OF TURN	WHEEL NO.	DIM. "A"	TOTAL WT.	TURN ASM. NO.
TIMKEN BEARING PLATE					
24"	45°	306-24	1'0"	197#	309-2445
	90°		24"	220#	309-2490
	180°		1'0"	210#	309-2418
30"	45°	306-30	1'0"	234#	309-3045
	90°		27"	262#	309-3090
	180°		1'0"	251#	309-3018
36"	45°	306-36	1'0"	295#	309-3645
	90°		30"	327#	309-3690
	180°		1'0"	315#	309-3618
42"	45°	306-42	1'0"	332#	309-4245
	90°		33"	370#	309-4290
	180°		1'0"	356#	309-4218
48"	45°	306-48	1'0"	445#	309-4845
	90°		36"	488#	309-4890
	180°		1'0"	472#	309-4818



MARK	QTY.	PT. NO.	DESCRIPTION
1	1	306-	WHEEL ASSEMBLY
2	1	1041	SHAFT ASSEMBLY
3	2	495A	BEARING TIMKEN
4	1	1006	BEARING RETAINER
5	1	1011	HUB COVER
6	1	1014	DUST SHIELD
7	4		3/4" x 1 1/2" HH BOLT w/N & W.
8	3		1/2" x 1 1/2" HH, CS, DRILLED
9	4		5/16" x 3/4" HHCS w/N & W.
10	2	492A	BEARING RACE, TIMKEN

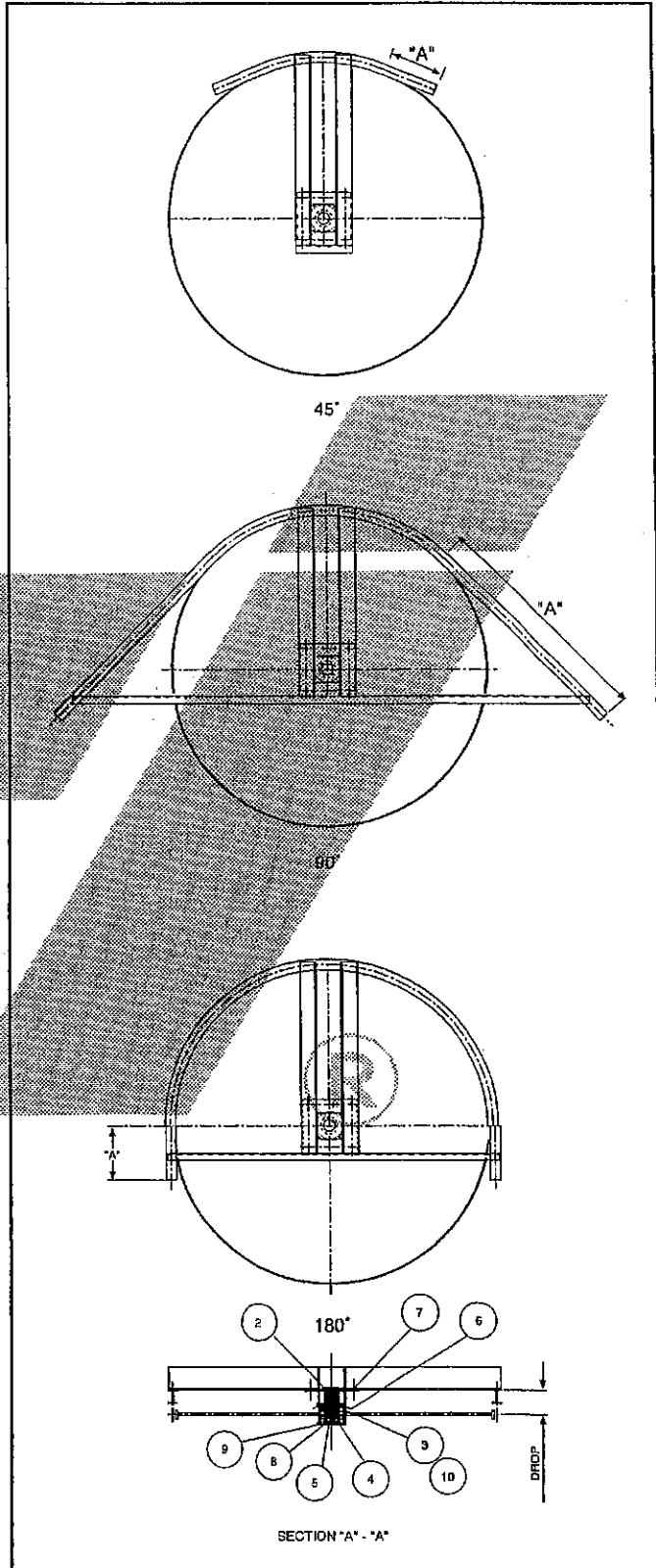


Rapid Industries, Inc.

DRAWINGS FOR CONCEPT ONLY; NOT FOR ENGINEERING USE

4" I, PLATE WHEEL TURN ASSEMBLY TIMKEN BEARING - 7³/₁₆" & 8" DROP

PITCH DIA.	DEG. OF TURN	WHEEL NO.	DIM. "A"	TOTAL WT.	TURN ASM. NO.
TIMKEN BEARING PLATE					
24"	45°	405-24	1'0"	216#	409-2445
	90°		24"	242#	409-2490
	180°		1'0"	230#	409-2418
30"	45°	405-30	1'0"	254#	409-3045
	90°		27"	289#	409-3090
	180°		1'0"	273#	409-3018
36"	45°	405-36	1'0"	306#	409-3645
	90°		30"	348#	409-3690
	180°		1'0"	333#	409-3618
42"	45°	405-42	1'0"	358#	409-4245
	90°		33"	406#	409-4290
	180°		1'0"	388#	409-4218
48"	45°	405-48	1'0"	472#	409-4845
	90°		36"	528#	409-4890
	180°		1'0"	507#	409-4818



MARK	QTY.	PT. NO.	DESCRIPTION
1	1	405-	WHEEL ASSEMBLY
2	1	1001	SHAFT ASSEMBLY
3	2	495A	BEARING TIMKEN
4	1	1006	BEARING RETAINER
5	1	1011	HUB COVER
6	1	1014	DUST SHIELD
7	4		1/2" x 1 1/2" HH BOLT w/L.W.
8	3		1/2" x 1 1/2" HH,CS, DRILLED
9	6		5/16" x 3/4" HHCS w/L.W.
10	2	492A	BEARING RACE, TIMKEN

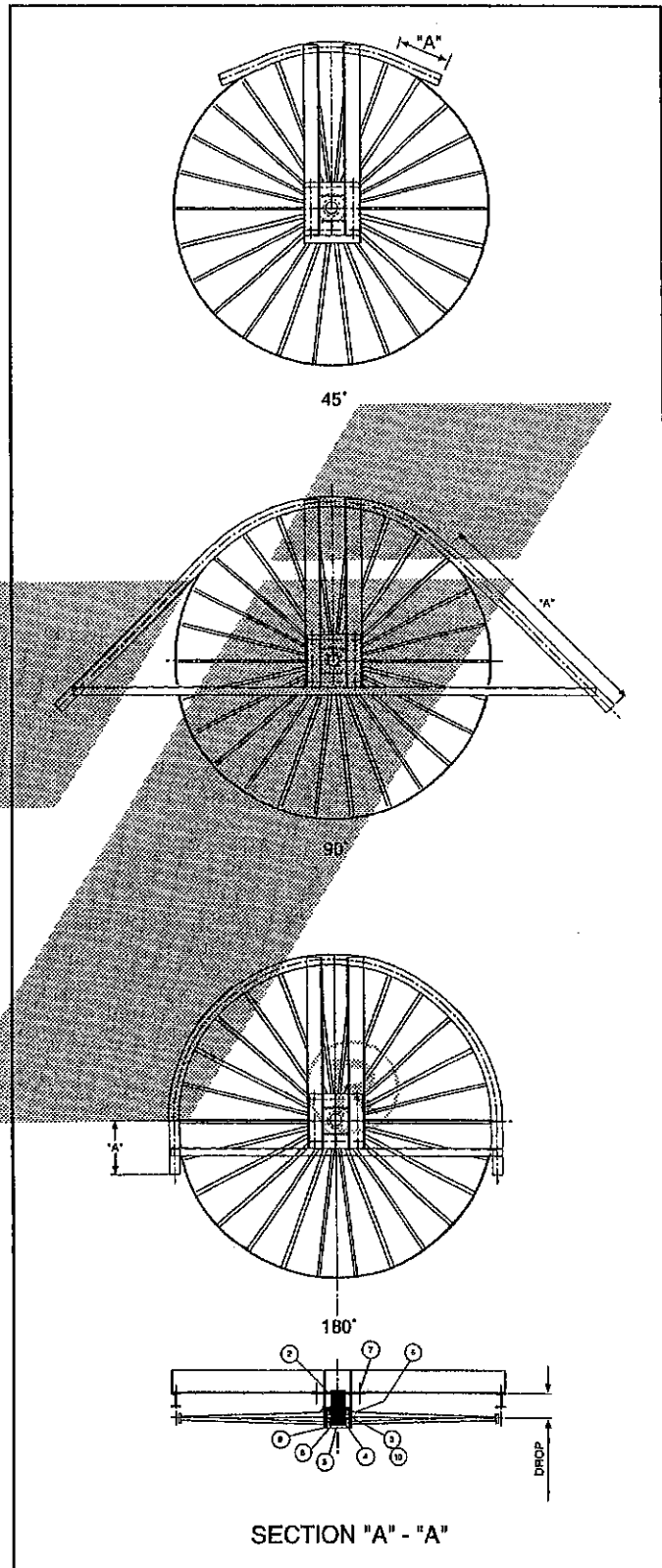


2⁵/₈" I, TRACTION WHEEL TURN ASSEMBLY TIMKEN BEARING - 4¹/₂" DROP

PITCH DIA.	DEG. OF TURN	WHEEL NO.	DIM. "A"	TOTAL WT.	TURN ASM. NO.
TIMKEN BEARING					
18"	45°	201-18	1'0"	60#	212-1845
	90°		1'9"	62#	212-1890
	180°		1'0"	73#	212-1818
24"	45°	201-24	1'0"	72#	212-2445
	90°		2'0"	75#	212-2490
	180°		1'0"	89#	212-2418
30"	45°	201-30	1'0"	82#	212-3045
	90°		2'3"	86#	212-3090
	180°		1'0"	104#	212-3018
36"	45°	201-36	1'0"	99#	212-3645
	90°		2'6"	104#	212-3690
	180°		1'0"	125#	212-3618
42"	45°	201-42	1'0"	112#	212-4245
	90°		2'9"	117#	212-4290
	180°		1'0"	142#	212-4218
48"	45°	201-48	1'0"	131#	212-4845
	90°		3'0"	137#	212-4890
	180°		1'0"	165#	212-4818

MARK	QTY	PT. NO.	DESCRIPTION
1	1	201	WHEEL ASSEMBLY
2	1	1031	SHAFT ASSEMBLY
3	2	LM29749	BEARING TIMKEN CONE
4	1	1008	BEARING RETAINER
5	1	1012	HUB COVER
6			N/A
7	4		3/8" x 1 1/4" HHCS, DRILLED
8	1		3/8" x 1 1/4" BOLT w/LW
9			N/A
10	2	LM29710	BEARING TIMKEN CUP

NOTE: INTERCHANGEABLE w/DODGE #70 HUB



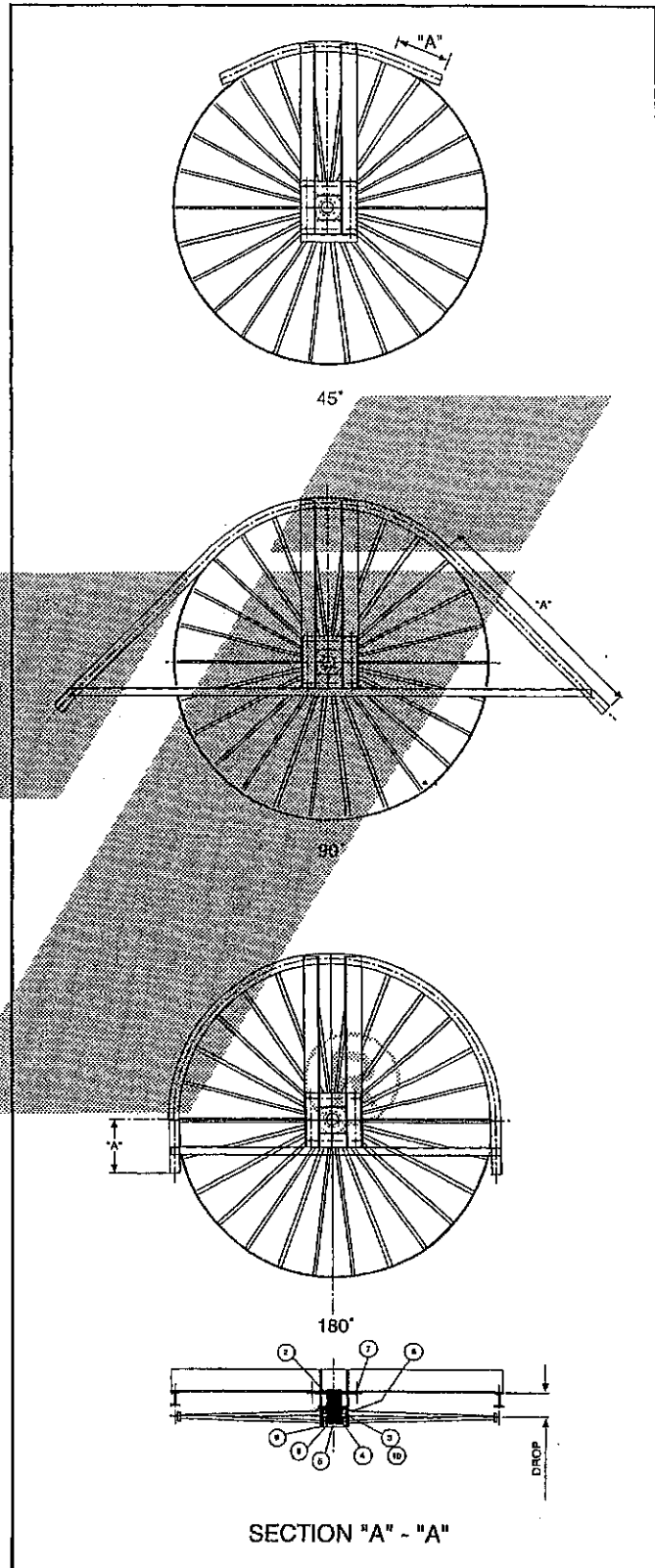
Rapid Industries, Inc.

DRAWINGS FOR CONCEPT ONLY; NOT FOR ENGINEERING USE

3" I, TRACTION WHEEL TURN ASSEMBLY TIMKEN BEARING - 5 1/2" DROP

PITCH DIA.	DEG. OF TURN	WHEEL NO.	DIM. "A"	TOTAL WT.	TURN ASM. NO.
TIMKEN BEARING					
18"	45°	301-18	1'0"	142#	312-1845
	90°		21"	160#	312-1890
	180°		1'0"	152#	312-1818
24"	45°	301-24	1'0"	165#	312-2445
	90°		24"	188#	312-2490
	180°		1'0"	178#	312-2418
30"	45°	301-30	1'0"	190#	312-3045
	90°		27"	218#	312-3090
	180°		1'0"	207#	312-3018
36"	45°	301-36	1'0"	217#	312-3645
	90°		30"	249#	312-3690
	180°		1'0"	237#	312-3618
42"	45°	301-42	1'0"	244#	312-4245
	90°		33"	282#	312-4290
	180°		1'0"	268#	312-4218
48"	45°	301-48	1'0"	265#	312-4845
	90°		36"	308#	312-4890
	180°		1'0"	292#	312-4818
54"	45°	301-54	1'0"	288#	312-5445
	90°		39"	337#	312-5490
	180°		1'0"	318#	312-5418
60"	45°	301-60	1'0"	347#	312-6045
	90°		42"	415#	312-6090
	180°		1'0"	392#	312-6018
66"	45°	301-66	1'0"	373#	312-6645
	90°		45"	445#	312-6690
	180°		1'0"	422#	312-6618
72"	45°	301-72	1'0"	401#	312-7245
	90°		48"	484#	312-7290
	180°		1'0"	454#	312-7218

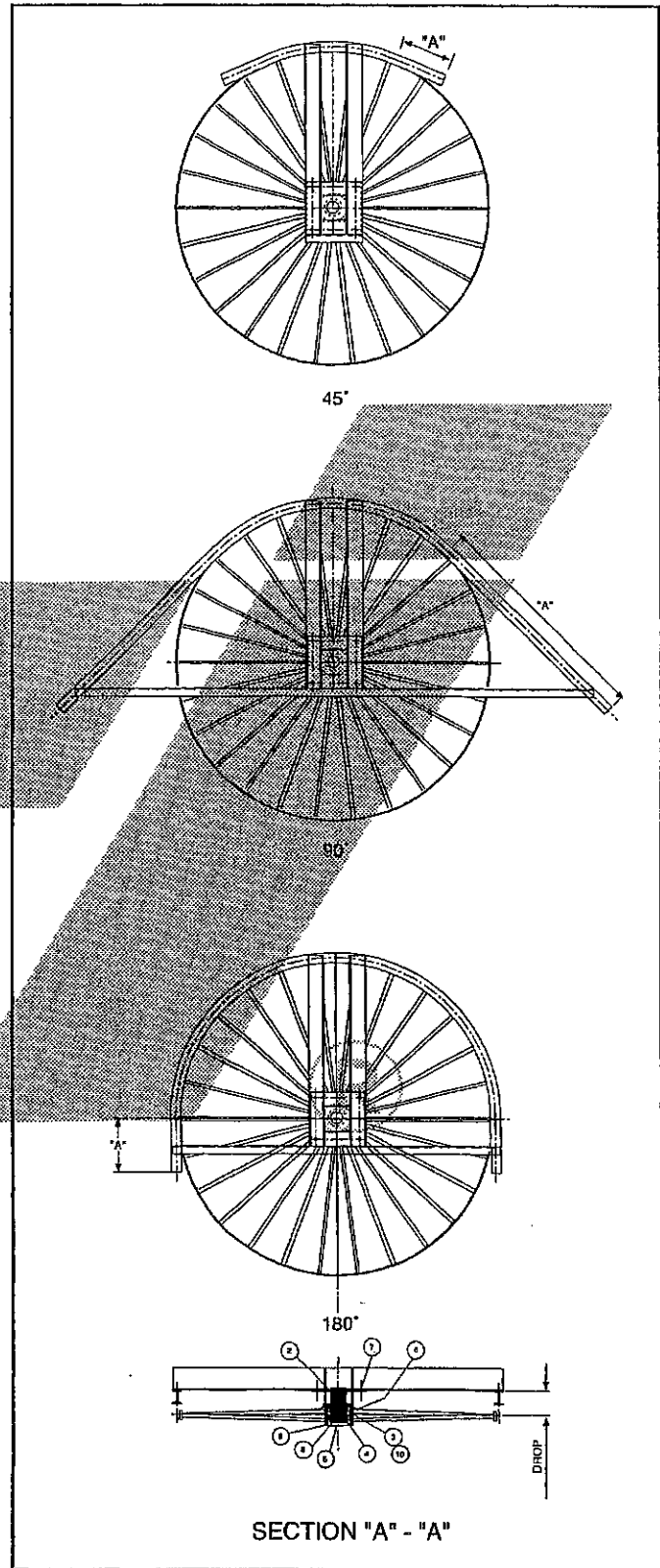
MARK	QTY.	PT. NO.	DESCRIPTION
1	1	301-	WHEEL ASSEMBLY
2	1	1041	SHAFT ASSEMBLY
3	2	495A	BEARING TIMKEN
4	1	1006	BEARING RETAINER
5	1	1011	HUB COVER
6	1	1014	DUST SHIELD
7	4		1/2" x 1 1/2" HH BOLT w/L.W.
8	3		1/2" x 1 1/2" HH, CS, DRILLED
9	6		5/16" x 3/4" HHCS w/L.W.
10	2	492A	BEARING RACE, TIMKEN



4" I, TRACTION WHEEL TURN ASSEMBLY TIMKEN BEARING - 7³/₁₆" & 8" DROP

PITCH DIA.	DEG. OF TURN	WHEEL NO.	DIM. "A"	TOTAL WT.	TURN ASM. NO.
TIMKEN BEARING					
24"	45°	401-24	1'0"	188#	410-2445
	90°		24"	214#	410-2490
	180°		1'0"	202#	410-2418
30"	45°	401-30	1'0"	215#	410-3045
	90°		27"	250#	410-3090
	180°		1'0"	234#	410-3018
36"	45°	401-36	1'0"	245#	410-3645
	90°		30"	287#	410-3690
	180°		1'0"	272#	410-3618
42"	45°	401-42	1'0"	274#	410-4245
	90°		33"	322#	410-4290
	180°		1'0"	304#	410-4218
48"	45°	401-48	1'0"	300#	410-4845
	90°		36"	356#	410-4890
	180°		1'0"	335#	410-4818
54"	45°	401-54	1'0"	328#	410-5445
	90°		39"	391#	410-5490
	180°		1'0"	369#	410-5418
60"	45°	401-60	1'0"	366#	410-6045
	90°		42"	434#	410-6090
	180°		1'0"	411#	410-6018
66"	45°	401-66	1'0"	394#	410-6645
	90°		45"	466#	410-6690
	180°		1'0"	443#	410-6618
72"	45°	401-72	1'0"	424#	410-7245
	90°		48"	507#	410-7290
	180°		1'0"	477#	410-7218

MARK	QTY	PT. NO.	DESCRIPTION
1	1	401	WHEEL ASSEMBLY
2	1	1001	SHAFT ASSEMBLY
3	2	495A	BEARING TIMKEN
4	1	1006	BEARING RETAINER
5	1	1011	HUB COVER
6	1	1014	DUST SHIELD
7	4		1/2" x 1 1/2" HH BOLT w/L.W.
8	3		1/2" x 1 1/2" HH, CS, DRILLED
9	6		5/16" x 3/4" HHCS w/L.W.
10	2	492A	BEARING RACE, TIMKEN



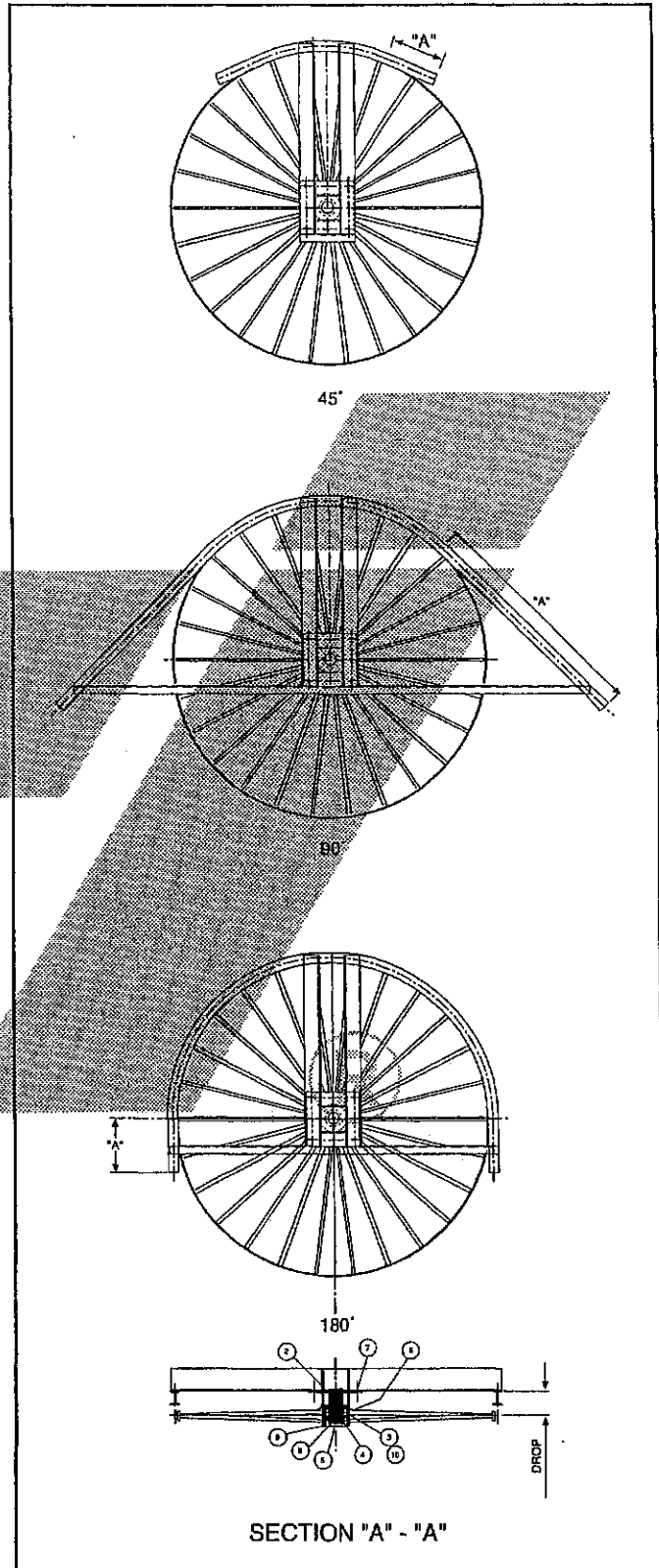
Rapid Industries, Inc.

DRAWINGS FOR CONCEPT ONLY; NOT FOR ENGINEERING USE

6" I, TRACTION WHEEL TURN ASSEMBLY FOR X-458 CHAIN TIMKEN BEARING - 10" DROP

PITCH DIA.	DEG. OF TURN	WHEEL NO.	DIM. "A"	TOTAL WT.	TURN ASM. NO.
TIMKEN BEARING					
24"	45°	401-24	1'0"	205#	610-2445
	90°		24"	253#	610-2490
	180°		1'0"	219#	610-2418
30"	45°	401-30	1'0"	238#	610-3045
	90°		27"	311#	610-3090
	180°		1'0"	275#	610-3018
36"	45°	401-36	1'0"	263#	610-3645
	90°		30"	325#	610-3690
	180°		1'0"	307#	610-3618
42"	45°	401-42	1'0"	293#	610-4245
	90°		33"	365#	610-4290
	180°		1'0"	337#	610-4218
48"	45°	401-48	1'0"	320#	610-4845
	90°		36"	403#	610-4890
	180°		1'0"	378#	610-4818
54"	45°	401-54	1'0"	355#	610-5445
	90°		39"	449#	610-5490
	180°		1'0"	419#	610-5418
60"	45°	401-60	1'0"	388#	610-6045
	90°		42"	490#	610-6090
	180°		1'0"	461#	610-6018
66"	45°	401-66	1'0"	429#	610-6645
	90°		45"	552#	610-6690
	180°		1'0"	507#	610-6618
72"	45°	401-72	1'0"	462#	610-7245
	90°		48"	587#	610-7290
	180°		1'0"	532#	610-7218

MARK	QTY	PT. NO.	DESCRIPTION
1	1	401	WHEEL ASSEMBLY
2	1	1005	SHAFT ASSEMBLY
3	2	495A	BEARING TIMKEN
4	1	1006	BEARING RETAINER
5	1	1011	HUB COVER
6	1	1014	DUST SHIELD
7	4		1/2" x 1 1/2" HH BOLT w/L.W.
8	3		1/2" x 1 1/2" HH, CS, DRILLED
9	10		5/16 x 3/4 HHCS w/L.W.
10	2	492A	BEARING RACE, TIMKEN

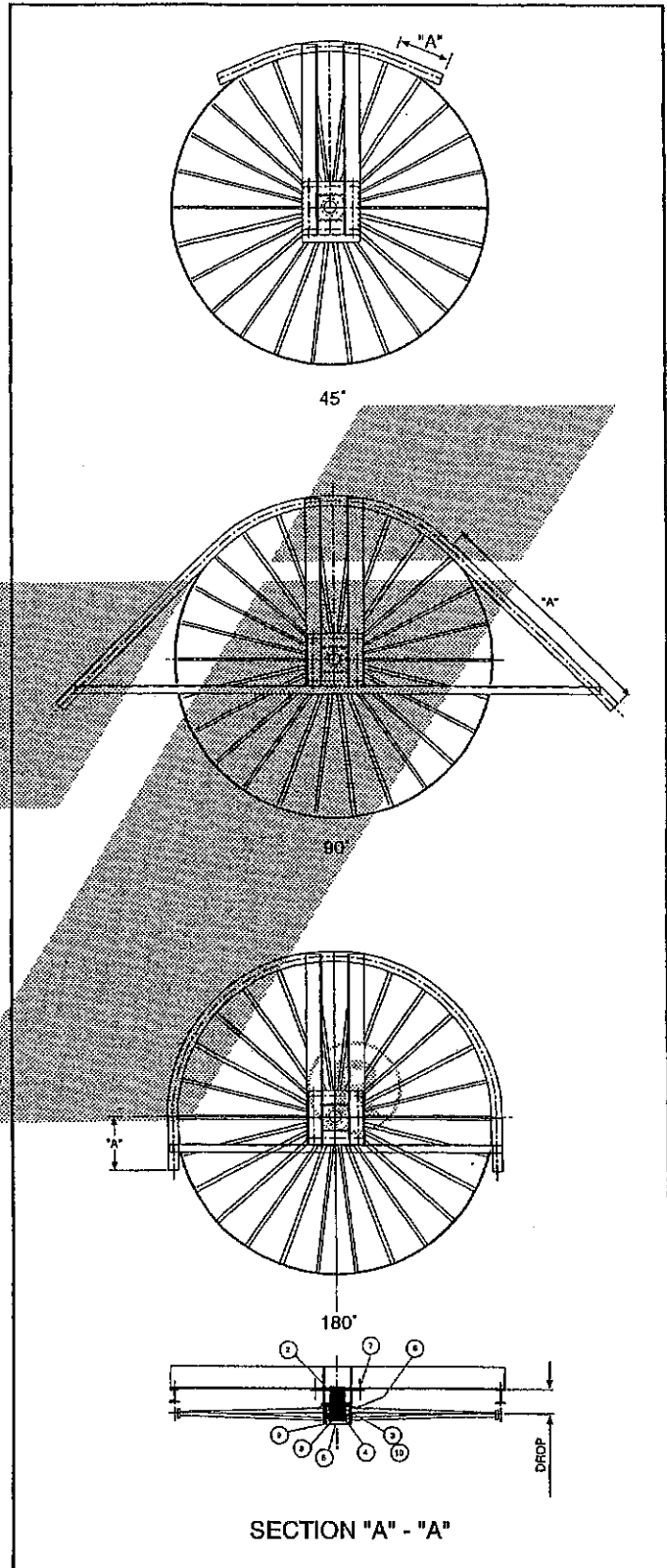


6" I, TRACTION WHEEL TURN ASSEMBLY

TIMKEN BEARING - 10" DROP

PITCH DIA.	DEG. OF TURN	WHEEL NO.	DIM. "A"	TOTAL WT.	TURN ASM. NO.
TIMKEN BEARING					
24"	45°	601-24	1'0"	280#	613-2445
	90°		24"	288#	613-2490
	180°		1'0"	276#	613-2418
30"	45°	601-30	1'0"	265#	613-3045
	90°		27"	316#	613-3090
	180°		1'0"	298#	613-3018
36"	45°	601-36	1'0"	320#	613-3645
	90°		30"	382#	613-3690
	180°		1'0"	364#	613-3618
42"	45°	601-42	1'0"	348#	613-4245
	90°		33"	430#	613-4290
	180°		1'0"	411#	613-4218
48"	45°	601-48	1'0"	395#	613-4845
	90°		36"	478#	613-4890
	180°		1'0"	453#	613-4818
54"	45°	601-54	1'0"	441#	613-5445
	90°		39"	542#	613-5490
	180°		1'0"	508#	613-5418
60"	45°	601-60	1'0"	491#	613-6045
	90°		42"	593#	613-6090
	180°		1'0"	564#	613-6018
66"	45°	601-66	1'0"	520#	613-6645
	90°		45"	618#	613-6690
	180°		1'0"	598#	613-6618
72"	45°	601-72	1'0"	560#	613-7245
	90°		48"	647#	613-7290
	180°		1'0"	608#	613-7218

MARK	QTY.	PT. NO.	DESCRIPTION
1	1	601	WHEEL ASSEMBLY
2	1	1010	SHAFT ASSEMBLY
3	2	495A	BEARING TIMKEN
4	1	1006	BEARING RETAINER
5	1	1011	HUB COVER
6	1	1014	DUST SHIELD
7	4		1/2" x 1 1/2" HH BOLT w/L.W.
8	3		1/2" x 1 1/2" HH, CS, DRILLED
9	10		5/16 x 3/4 HHCS w/L.W.
10	2	492A	BEARING RACE, TIMKEN



Rapid Industries, Inc.

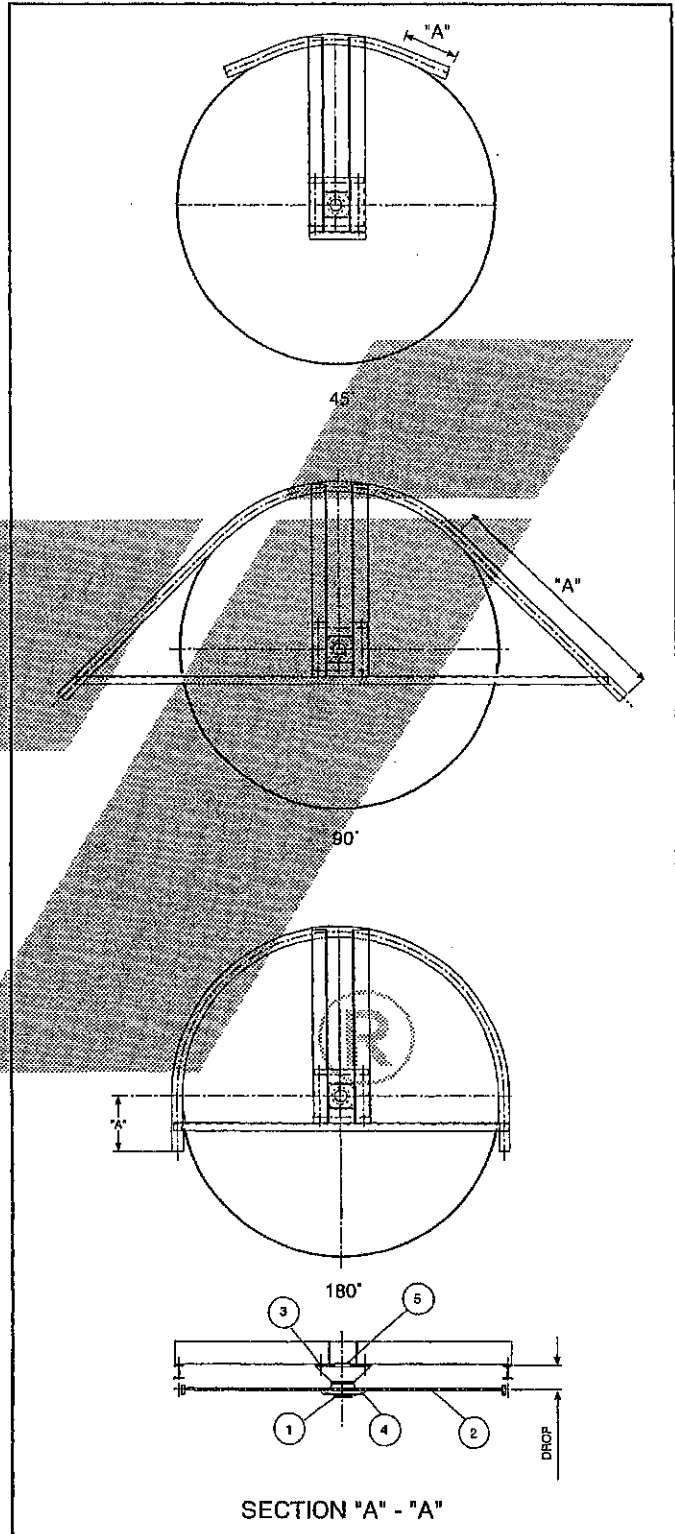
DRAWINGS FOR CONCEPT ONLY; NOT FOR ENGINEERING USE

3" I, PLATE WHEEL TURN ASSEMBLY DODGE #70 HUB* - 5 1/2" DROP

(*INTERCHANGEABLE w/CAST METAL INDUSTRIES CM-106)

PITCH DIA.	DEG. OF TURN	WHEEL NO.	DIM. "A"	TOTAL WT.	TURN ASM. NO.
DODGE 70 PLATE					
18"	45°	338-18	1'0"	239#	336-1845
	90°		24"	261#	336-1890
	180°		1'0"	251#	336-1818
24"	45°	338-24	1'0"	273#	336-2445
	90°		27"	312#	336-2490
	180°		1'0"	296#	336-2418
30"	45°	338-30	1'0"	313#	336-3045
	90°		30"	367#	336-3090
	180°		1'0"	348#	336-3018
36"	45°	338-36	1'0"	358#	336-3645
	90°		33"	428#	336-3690
	180°		1'0"	404#	336-3618
42"	45°	338-42	1'0"	409#	336-4245
	90°		36"	496#	336-4290
	180°		1'0"	467#	336-4218
48"	45°	338-48	1'0"	461#	336-4845
	90°		39"	565#	336-4890
	180°		1'0"	531#	336-4818

MARK	QTY	PT NO.	DESCRIPTION
1	1	#70	DODGE TRACTION WHEEL HUB ASSEMBLY
2	1	338	PLATE WHEEL ASSEMBLY
3	4	—	3/4" - 10 UNC - 2 1/2" HEX HD. : BOLTS w/ NUT & FLAT WSH.
4	6	—	3/4" - 10 UNC X 2" HEX HD. BOLTS w/ FLAT WSH.
5	2	—	1/2" - 13 UNC - 1 1/4" HEX HD. CAP SCREW w/ FLAT WSH.

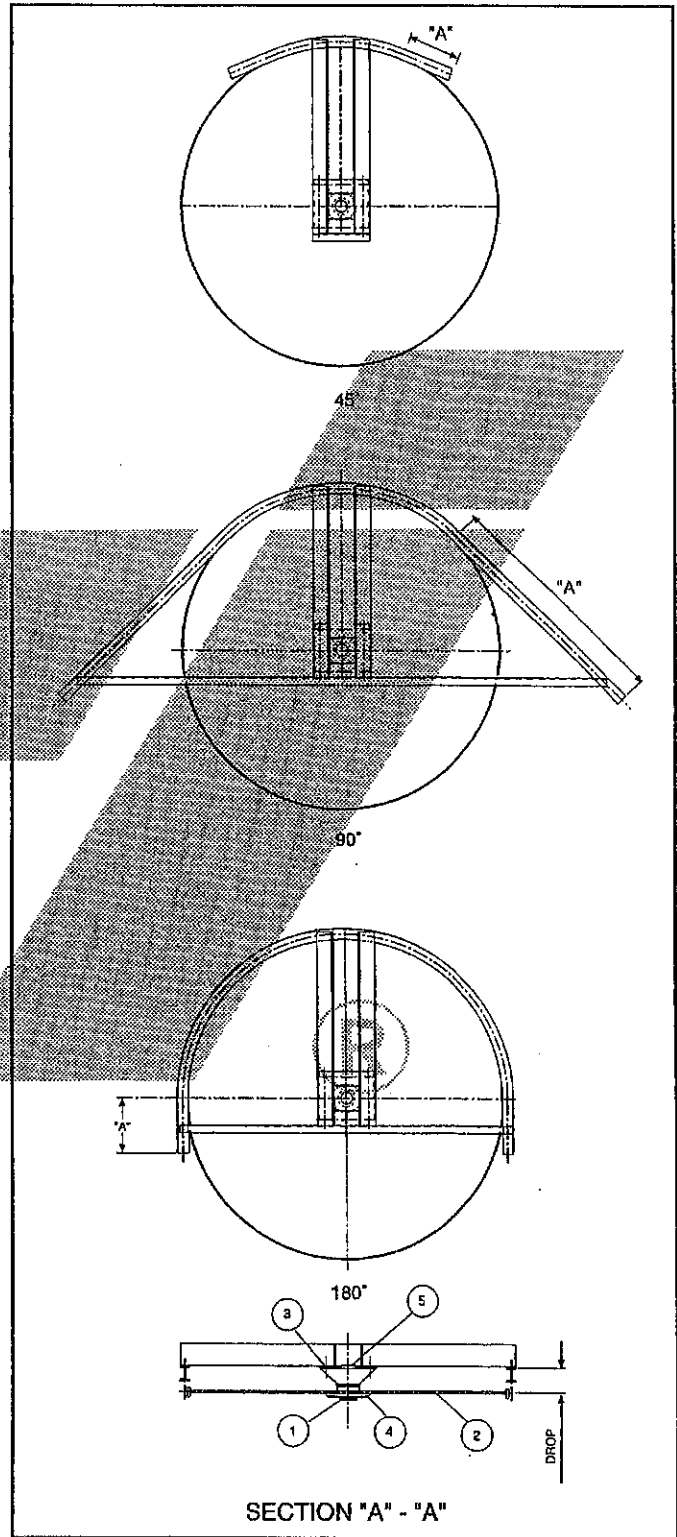


4" I, PLATE WHEEL TURN ASSEMBLY

DODGE 70 HUB* - 7³/₁₆" & 8" DROP

(*INTERCHANGEABLE w/CAST METAL INDUSTRIES CM-106)

PITCH DIA.	DEG. OF TURN	WHEEL NO.	DIM. "A"	TOTAL WT.	TURN ASM. NO.
DODGE 70 PLATE					
18"	45°	438-18	1'0"	244#	436-1845
	90°		24"	270#	436-1890
	180°		1'0"	260#	436-1818
24"	45°	438-24	1'0"	279#	436-2445
	90°		27"	323#	436-2490
	180°		1'0"	306#	436-2418
30"	45°	438-30	1'0"	319#	436-3045
	90°		30"	380#	436-3090
	180°		1'0"	360#	436-3018
36"	45°	438-36	1'0"	364#	436-3645
	90°		33"	443#	436-3690
	180°		1'0"	417#	436-3618
42"	45°	438-42	1'0"	415#	436-4245
	90°		36"	512#	436-4290
	180°		1'0"	482#	436-4218
48"	45°	438-48	1'0"	468#	436-4845
	90°		39"	583#	436-4890
	180°		1'0"	548#	436-4818



MARK	QTY	PT. NO.	DESCRIPTION
1	1	CM-106	HUB ASSEMBLY
2	1	438	PLATE WHEEL ASSEMBLY
3	4	—	3/4" - 10 UNC - 2 1/2" HEX HD. BOLTS w/ NUT & L.W.
4	4	—	3/4" - 10 UNC X 2" HEX HD. BOLTS w/ NUT & L.W.
5	2	—	1/2" - 13 UNC - 1 1/4" HEX HD. CAP SCREW w/ L.W.



Rapid Industries, Inc.

DRAWINGS FOR CONCEPT ONLY; NOT FOR ENGINEERING USE

6" I, PLATE WHEEL TURN ASSEMBLY

DODGE #70 HUB* - 10" DROP

(*INTERCHANGEABLE w/CAST METAL INDUSTRIES CM106)

PITCH DIA.	DEG. OF TURN	WHEEL NO.	DIM. "A"	TOTAL WT.	TURN ASM. NO.
DODGE 70 PLATE					
18"	45°	638-18	1'0"	258#	636-1845
	90°		24"	313#	636-1890
	180°		1'0"	294#	636-1818
24"	45°	638-24	1'0"	293#	636-2445
	90°		27"	267#	636-2490
	180°		1'0"	342#	636-2418
30"	45°	638-30	1'0"	334#	636-3045
	90°		30"	433#	636-3090
	180°		1'0"	402#	636-3018
36"	45°	638-36	1'0"	393#	636-3645
	90°		33"	519#	636-3690
	180°		1'0"	481#	636-3618
42"	45°	638-42	1'0"	489#	636-4245
	90°		36"	629#	636-4290
	180°		1'0"	596#	636-4218
48"	45°	638-48	1'0"	565#	636-4845
	90°		39"	727#	636-4890
	180°		1'0"	690#	636-4818

MARK	QTY	PT. NO.	DESCRIPTION
1	1	CM 106	HUB ASSEMBLY
2	1	638	PLATE WHEEL ASSEMBLY
3	4	—	3/4" - 10 UNC - 2 1/2" HEX HD. BOLTS w/ NUTS & L.W.
4	4	—	3/4" - 10 UNC X 2" HEX HD. BOLTS w/ NUTS & L.W.
5	2	—	1/2" - 13 UNC - 1 1/4" HEX HD. CAP SCREW w/ L.W.

