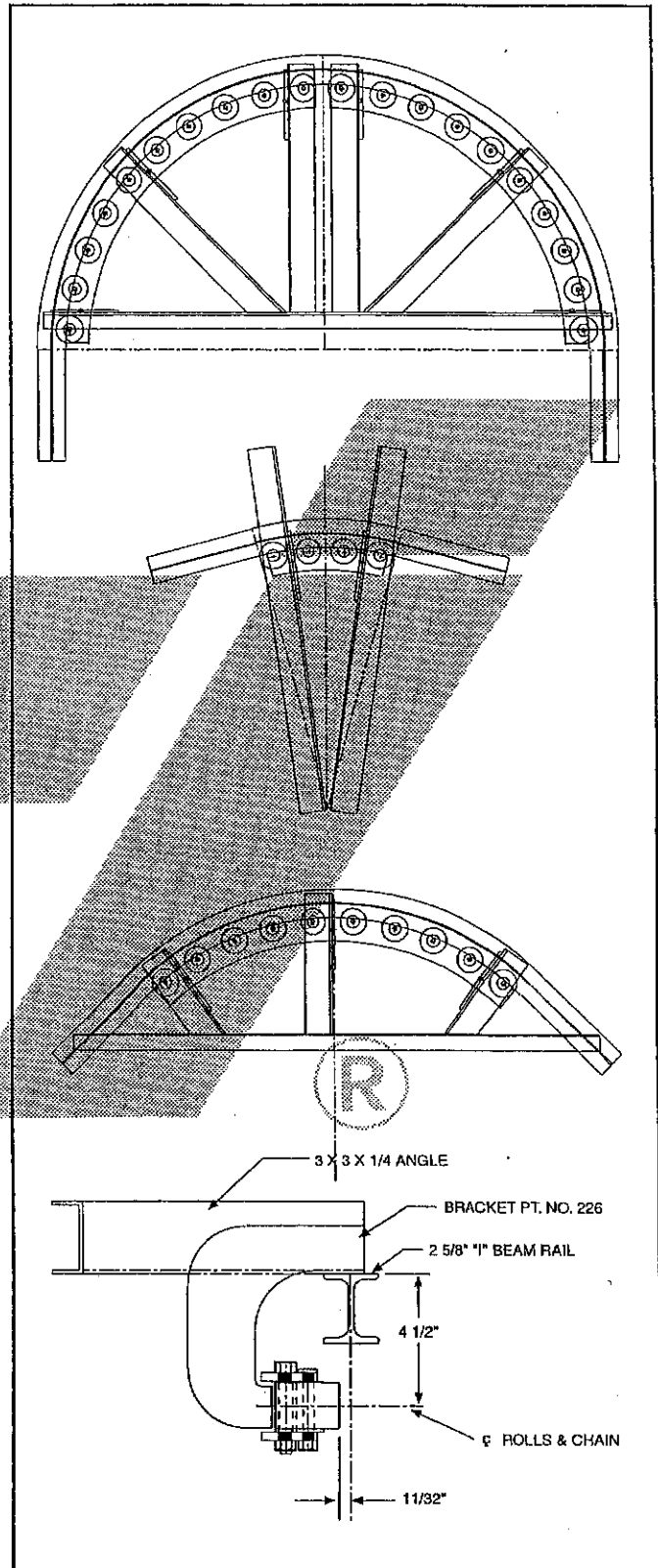


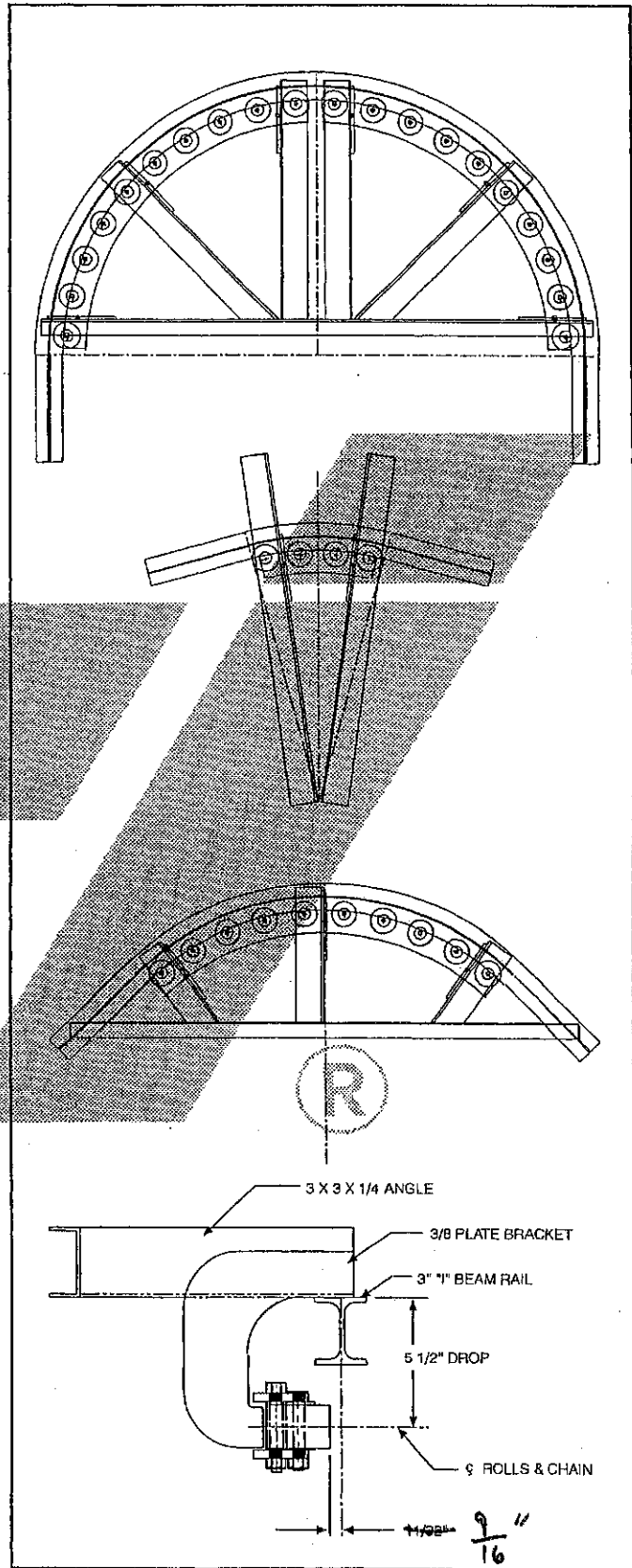
2" I ROLLER BANK TURNS GREASE PACKED - 4 1/2" DROP

TURN ASM. NUMBER	RADIUS	DEGREE OF TURN	NO. OF BRACKETS	NO. OF ROLLS	WEIGHT
18" RADIUS - 2 5/8" I-BEAM - 4 1/2" DROP					
263-30	18"	30°	2	3	43#
263-45	18"	45°	2	5	48#
263-60	18"	60°	2	6	53#
263-90	18"	90°	3	9	74#
263-18	18"	180°	6	18	118#
24" RADIUS - 2 5/8" I-BEAM - 4 1/2" DROP					
264-30	24"	30°	2	4	51#
264-45	24"	45°	2	6	53#
264-60	24"	60°	2	8	59#
264-90	24"	90°	3	12	80#
264-18	24"	180°	6	24	149#
36" RADIUS - 2 5/8" I-BEAM - 4 1/2" DROP					
266-30	36"	30°	2	6	46#
266-45	36"	45°	2	9	68#
266-60	36"	60°	2	12	78#
266-90	36"	90°	3	18	103#
266-18	36"	180°	6	36	217#
48" RADIUS - 2 5/8" I-BEAM - 4 1/2" DROP					
268-30	48"	30°	2	9	61#
268-45	48"	45°	3	13	91#
268-60	48"	60°	3	17	119#
268-90	48"	90°	4	26	134#
268-18	48"	180°	8	52	260#



3" I ROLLER BANK TURNS ZERK LUBRICATED - 5 1/2" DROP

TURN ASM. NUMBER	RADIUS	DEGREE OF TURN	NO. OF BRACKETS	NO. OF ROLLS	WEIGHT
18" RADIUS - 3" I-BEAM - 5 1/2" DROP					
363-30	18"	30°	2	3	59#
363-45	18"	45°	2	3	64#
363-60	18"	60°	2	4	72#
363-90	18"	90°	2	6	82#
363-18	18"	180°	4	12	152#
24" RADIUS - 3" I-BEAM - 5 1/2" DROP					
364-30	24"	30°	2	3	67#
364-45	24"	45°	2	4	77#
364-60	24"	60°	2	5	90#
364-90	24"	90°	3	8	125#
364-18	24"	180°	6	16	221#
30" RADIUS - 3" I-BEAM - 5 1/2" DROP					
365-30	30"	30°	2	4	75#
365-45	30"	45°	2	5	90#
365-60	30"	60°	2	7	105#
365-90	30"	90°	3	10	146#
365-18	30"	180°	6	20	268#
36" RADIUS - 3" I-BEAM - 5 1/2" DROP					
366-30	36"	30°	2	4	85#
366-45	36"	45°	2	6	100#
366-60	36"	60°	3	8	116#
366-90	36"	90°	3	12	172#
366-18	36"	180°	6	24	314#
48" RADIUS - 3" I-BEAM - 5 1/2" DROP					
368-30	48"	30°	2	5	96#
368-45	48"	45°	3	8	115#
368-60	48"	60°	3	10	166#
368-90	48"	90°	4	16	239#
368-18	48"	180°	8	32	459#
60" RADIUS - 3" I-BEAM - 5 1/2" DROP					
369-30	60"	30°	2	7	138#
369-45	60"	45°	3	10	176#
369-60	60"	60°	4	13	213#
369-90	60"	90°	5	20	288#
369-18	60"	180°	10	40	566#
72" RADIUS - 3" I-BEAM - 5 1/2" DROP					
370-30	72"	30°	3	8	158#
370-45	72"	45°	3	12	200#
370-60	72"	60°	4	14	242#
370-90	72"	90°	5	22	307#
370-18	72"	180°	10	44	637#



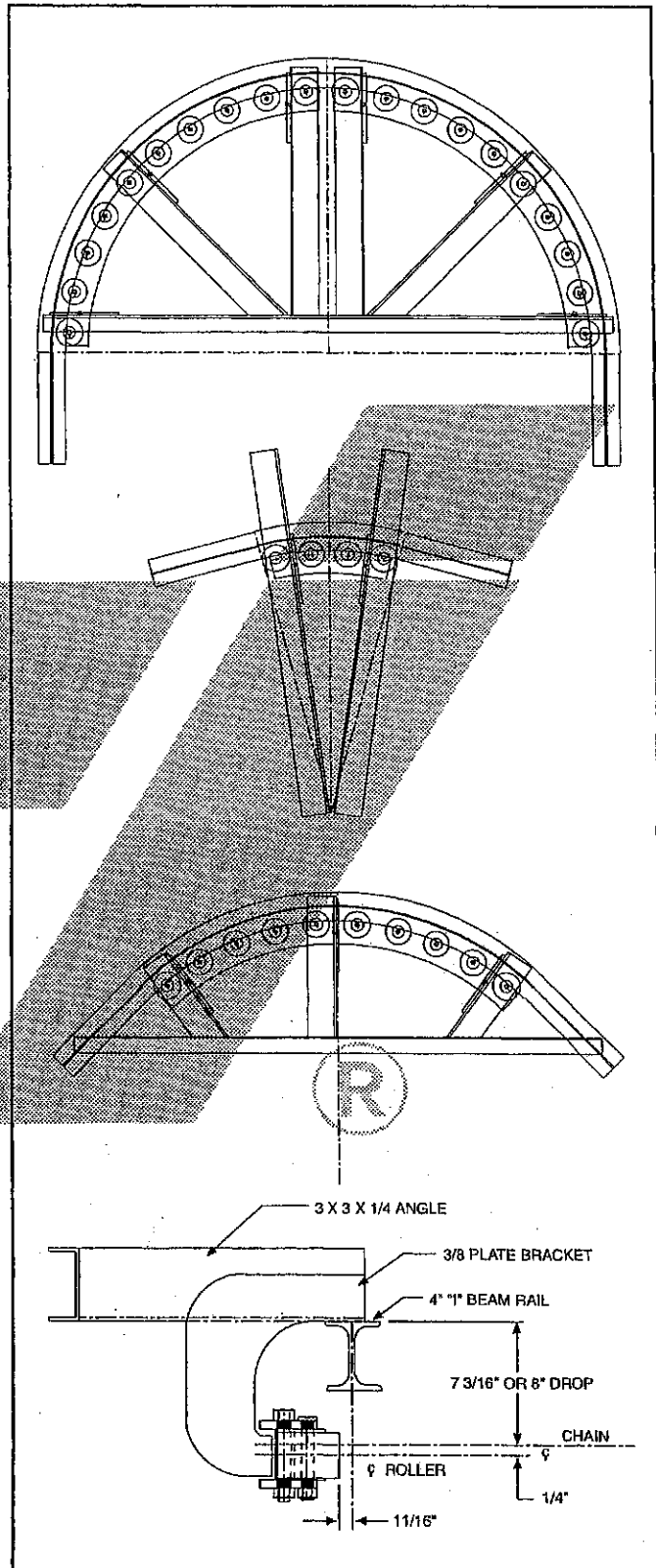
Rapid Industries, Inc.

DRAWINGS FOR CONCEPT ONLY; NOT FOR ENGINEERING USE

4" I ROLLER BANK TURNS ZERK LUBRICATED

7³/₁₆" & 8" DROP

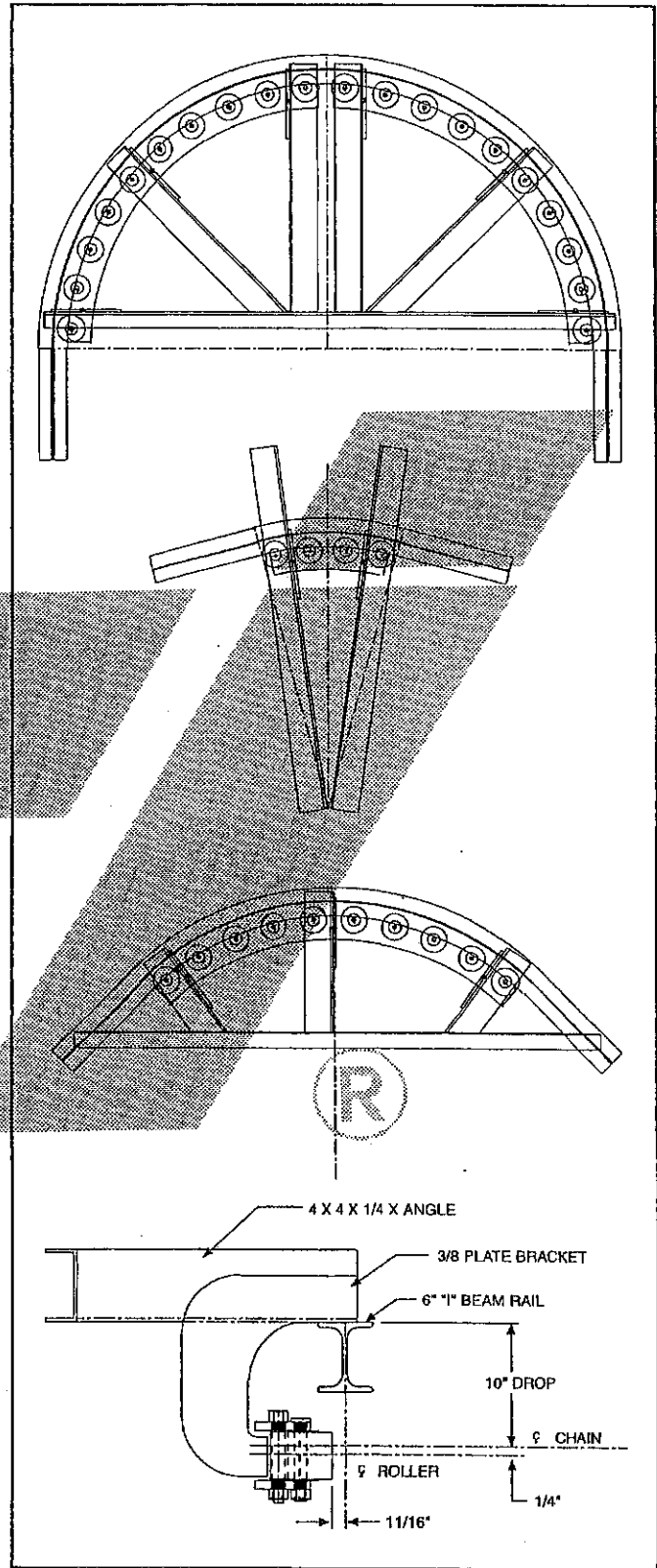
TURN ASM. NUMBER	RADIUS	DEGREE OF TURN	NO. OF BRACKETS	NO. OF ROLLS	WEIGHT
18" RADIUS - 4" I-BEAM - 7³/₁₆" & 8" DROP					
463-30	18"	30°	2	3	94#
463-45	18"	45°	2	3	100#
463-60	18"	60°	2	4	109#
463-90	18"	90°	2	6	117#
463-18	18"	180°	4	12	219#
24" RADIUS - 4" I-BEAM - 7³/₁₆" & 8" DROP					
464-30	24"	30°	2	3	107#
464-45	24"	45°	2	4	118#
464-60	24"	60°	2	6	133#
464-90	24"	90°	3	8	173#
464-18	24"	180°	6	16	313#
30" RADIUS - 4" I-BEAM - 7³/₁₆" & 8" DROP					
465-30	30"	30°	2	4	119#
465-45	30"	45°	2	5	137#
465-60	30"	60°	2	7	155#
465-90	30"	90°	3	10	200#
465-18	30"	180°	6	20	373#
36" RADIUS - 4" I-BEAM - 7³/₁₆" & 8" DROP					
466-30	36"	30°	2	4	136#
466-45	36"	45°	2	6	155#
466-60	36"	60°	3	8	175#
466-90	36"	90°	3	12	228#
466-18	36"	180°	6	24	445#
48" RADIUS - 4" I-BEAM - 7³/₁₆" & 8" DROP					
468-30	48"	30°	2	5	164#
468-45	48"	45°	3	8	193#
468-60	48"	60°	3	10	252#
468-90	48"	90°	4	16	322#
468-18	48"	180°	8	32	640#
60" RADIUS - 4" I-BEAM - 7³/₁₆" & 8" DROP					
470-30	60"	30°	2	7	230#
470-45	60"	45°	3	10	260#
470-60	60"	60°	4	13	320#
470-90	60"	90°	5	20	368#
470-18	60"	180°	10	40	793#
72" RADIUS - 4" I-BEAM - 7³/₁₆" & 8" DROP					
472-30	72"	30°	3	8	260#
472-45	72"	45°	3	12	320#
472-60	72"	60°	4	14	366#
472-90	72"	90°	5	22	422#
472-18	72"	180°	10	44	935#



6" I, X-458 CHAIN ROLLER BANK TURNS ZERK LUBRICATED 10" DROP

YOKE

TURN ASM. NUMBER	RADIUS	DEGREE OF TURN	NO. OF BRACKETS	NO. OF ROLLS	WEIGHT
18" RADIUS – 6" I-BEAM – 10" DROP					
663-30	18"	30°	2	3	108#
663-45	18"	45°	2	3	115#
663-60	18"	60°	2	4	127#
663-90	18"	90°	2	6	141#
663-18	18"	180°	4	12	254#
24" RADIUS – 6" I-BEAM – 10" DROP					
664-30	24"	30°	2	3	124#
664-45	24"	45°	2	4	138#
664-60	24"	60°	2	6	155#
664-90	24"	90°	3	8	201#
664-18	24"	180°	6	16	359#
30" RADIUS – 6" I-BEAM – 10" DROP					
665-30	30"	30°	2	4	139#
665-45	30"	45°	2	5	158#
665-60	30"	60°	2	7	180#
665-90	30"	90°	3	10	232#
665-18	30"	180°	6	20	426#
48" RADIUS – 6" I-BEAM – 10" DROP					
668-30	48"	30°	2	6	180#
668-45	48"	45°	3	8	220#
668-60	48"	60°	3	12	275#
668-90	48"	90°	4	16	367#
668-18	48"	180°	8	32	718#
60" RADIUS – 6" I-BEAM – 10" DROP					
671-30	60"	30°	2	7	271#
671-45	60"	45°	3	10	317#
671-60	60"	60°	4	13	363#
671-90	60"	90°	5	20	460#
671-18	60"	180°	10	40	989#
72" RADIUS – 6" I-BEAM – 10" DROP					
672-30	72"	30°	3	8	307#
672-45	72"	45°	3	12	361#
672-60	72"	60°	3	14	413#
672-90	72"	90°	5	22	514#
672-18	72"	180°	10	44	1126#



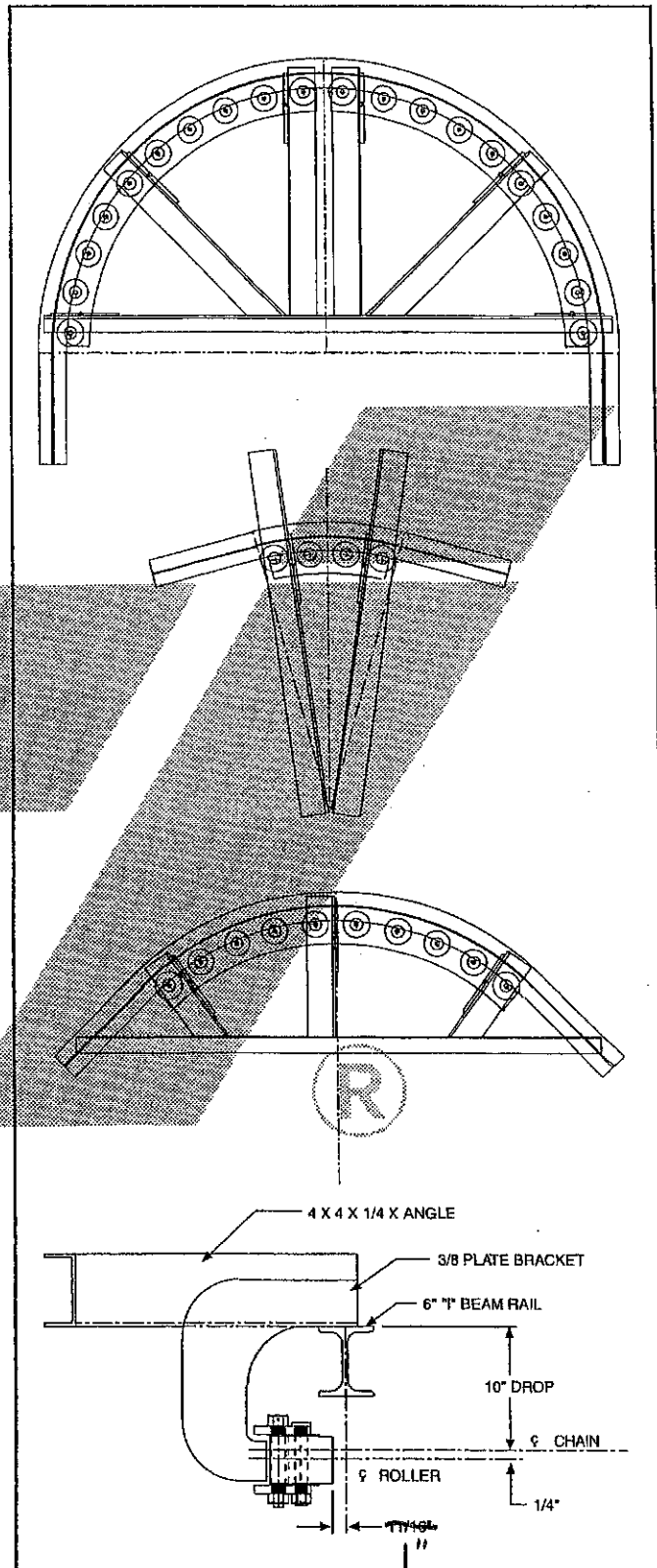
Rapid Industries, Inc.

DRAWINGS FOR CONCEPT ONLY; NOT FOR ENGINEERING USE

6" I, X-678 CHAIN ROLLER BANK TURNS ZERK LUBRICATED 10" DROP

YOKE

TURN ASM. NUMBER	RADIUS	DEGREE OF TURN	NO. OF BRACKETS	NO. OF ROLLS	WEIGHT
30" RADIUS - 6" I-BEAM - 10" DROP					
675-30	30"	30°	2	4	145#
675-45	30"	45°	2	5	167#
675-60	30"	60°	2	7	191#
675-90	30"	90°	3	10	253#
675-18	30"	180°	6	20	451#
36" RADIUS - 6" I-BEAM - 10" DROP					
676-30	36"	30°	2	4	169#
676-45	36"	45°	2	6	194#
676-60	36"	60°	3	8	219#
676-90	36"	90°	3	12	280#
676-18	36"	180°	6	24	533#
48" RADIUS - 6" I-BEAM - 10" DROP					
678-30	48"	30°	2	6	182#
678-45	48"	45°	3	8	238#
678-60	48"	60°	3	12	308#
678-90	48"	90°	4	16	397#
678-18	48"	180°	8	32	742#
60" RADIUS - 6" I-BEAM - 10" DROP					
682-30	60"	30°	2	7	272#
682-45	60"	45°	3	10	317#
682-60	60"	60°	4	13	363#
682-90	60"	90°	5	20	460#
682-18	60"	180°	10	40	989#
72" RADIUS - 6" I-BEAM - 10" DROP					
683-30	72"	30°	3	8	307#
683-45	72"	45°	3	12	361#
683-60	72"	60°	3	14	413#
683-90	72"	90°	5	22	514#
683-18	72"	180°	10	44	1126#



UNIT BRACKET 3", 4" & 6" SYSTEMS – VARIOUS DROPS

RAIL TROLLEY	CHAIN	DROP	"A"	"B"	ROLLER NUMBER	BOLT w/ ZERK NO.	ASSM. NUMBER	WEIGHT
2"	228	4 1/2"	1 1/32"	0"	S310	*	1068-1	10#
3"	348	5 1/2"	9/16"	0"	3051	3007-8	1068-2	13#
4"	458	7 3/16"	1 1/16"	1/4"	4051	4003-8	1068-3	16#
		8"					1068-4	
6"	458	10"	1 1/16"	1/4"	4051	4003-8	1068-5	16#
	678		1"				1068-6	

* NOTE: BOLTS 1/4" - 16NC - 2 1/4" FLAT HD CAP SCREW
ROLLS GREASE PACKED FOR 2" RAIL

TO BE USED FOR HORIZONTAL BENDS NOT IN EXCESS OF 5°

